



URBAN
LIVING
BATHROOMS

LUXURIOUS STAND ALONE BATHROOM FURNITURE



URBAN
LIVING
BATHROOMS



GREENWICH



QUEENS



BROOKLYN



TRIBECA



MANHATTAN

Urban Living Bathrooms is a beautiful collection of contemporary furniture all hand-built here in the UK and designed with the idea of maximising the space available. There is an extensive choice of 24 finishes across 5 door styles to choose from making your bathroom an eye catching addition to your home.

GREENWICH



GREENWICH



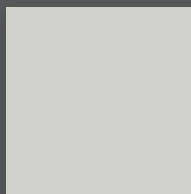
A flat slab door with curved vertical edges in a Gloss, Matt or Satin foiled finish.

* All cabinet internals are finished in a Light Grey Matt finish with the exception of White Gloss which is in a white matt finish.

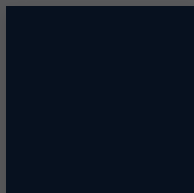
AVAILABLE IN THE FOLLOWING FINISHES:



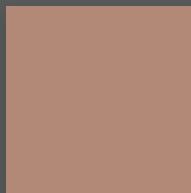
White Gloss



Light Grey Matt *



Navy Blue Matt *



Rose Gold Satin *



Featuring the Greenwich mineral cast basin standing 20mm high above the cabinet.

WC CABINETS

Two removable fronts
One removable co-ordinating top.
Cistern & plumbing access is through removable panels
Pan, seat & cistern not included.



500mm Cabinet
832h x 500w x 220d
GWC 50/2 - £299



500mm Cabinet
1037h x 500w x 220d
GWC 50/2 M - £349

600mm Cabinet
832h x 600w x 220d
GWC 60/2 - £299

600mm Cabinet
1037h x 600w x 220d
GWC 60/2 M - £349

MID HEIGHT WALL CABINETS

Please state L/R hand. Right hand illustrated



300mm Cabinet
One full height door
Three glass shelves
1150h x 300w x 220d
GW 30/2R - £299
GW 30/2L - £299



300mm Cabinet
One full height double
sided mirror door inc
No. 619 handle
Three glass shelves
1150h x 300w x 210d
GW 30/2FLR - £349
GW 30/2FLL - £349

ONE DRAWER UNITS

One basin
One deep drawer
Heavy duty wall hanging brackets fitted



500mm Unit
Dimensions including Basin
507h x 500w x 400d
G1D 500 - £499



600mm Unit
Dimensions including Basin
507h x 600w x 400d
G1D 600 - £499



800mm Unit
Dimensions including Basin
507h x 800w x 400d
G1D 800 - £529



1000mm Unit
Dimensions including Basin
507h x 1000w x 400d
G1D 1000 - £569

TWO DRAWER UNITS

One basin
One shaped drawer & One standard drawer
Heavy duty wall hanging brackets fitted



500mm Unit
Dimensions including Basin
507h x 500w x 400d
G2D 500 - £549



600mm Unit
Dimensions including Basin
507h x 600w x 400d
G2D 600 - £549



800mm Unit
Dimensions including Basin
507h x 800w x 400d
G2D 800 - £579



1000mm Unit
Dimensions including Basin
507h x 1000w x 400d
G2D 1000 - £619

CLOAKROOM & FLOORSTANDING UNITS

One basin
Two doors
One MFC Shelf



500mm Unit
Dimensions including Basin
830h x 500w x 400d
GF 500 - £549



600mm Unit
Dimensions including Basin
830h x 600w x 400d
GF 600 - £549



500mm Unit
Dimensions including Basin
507h x 500w x 400d
GW 500 - £459



600mm Unit
Dimensions including Basin
507h x 600w x 400d
GW 600 - £459

All unit dimensions located in matrix at rear of the brochure.

Unit heights include basins.

All prices include VAT (October 2019)

QUEENS



QUEENS



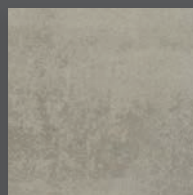
A flat slab door with an inset pull handle in a Gloss, Matt or Satin foiled finish.

* All cabinet internals finished in a Light Grey Matt finish with the exception of White Gloss which is in a white matt finish.

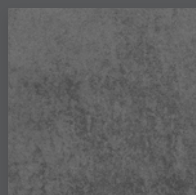
AVAILABLE IN THE FOLLOWING FINISHES:



White Gloss



Concrete Grey Matt *



Concrete Steel Matt *



Storm Grey Satin *



Featuring the Queens mineral cast basin standing 40mm high above the cabinet.

WC CABINETS

Two removable fronts
One removable co-ordinating top.
Cistern & plumbing access is through removable panels
Supplied with slab fronts
Pan, seat & cistern not included.



500 Unit
828h x 500w x 220d
QWC 50/2 - £299



500mm Cabinet
1033h x 500w x 220d
QWC 50/2 M - £349

600mm Cabinet
828h x 600w x 220d
QWC 60/2 - £299

600mm Cabinet
1033h x 600w x 220d
QWC 60/2 M - £349

ONE DRAWER UNITS

One basin
One deep drawer
Heavy duty wall hanging brackets fitted



500mm Unit
Dimensions including Basin
527h x 500w x 390d
Q1D 500 - £499



600mm Unit
Dimensions including Basin
527h x 600w x 390d
Q1D 600 - £499



800mm Unit
Dimensions including Basin
527h x 800w x 390d
Q1D 800 - £529



1000mm Unit
Dimensions including Basin
527h x 1000w x 390d
Q1D 1000 - £569



1200mm Unit
Dimensions including Basin
527h x 1200w x 390d
Q1D 1200 - £619

MID HEIGHT WALL CABINETS

Supplied with central side pull handle on solid door.
Please state L/R hand. Right hand illustrated



300mm Cabinet
One full height door
Three glass shelves
1150h x 300w x 220d
QW 30/2R - £299
QW 30/2L - £299



300mm Cabinet
One full height double
sided mirror door inc
No. 619 handle
Three glass shelves
1150h x 300w x 210d
QW 30/2FLR - £349
QW 30/2FLL - £349

TWO DRAWER UNITS

One basin
One shaped drawer & One standard drawer
Heavy duty wall hanging brackets fitted



500mm Unit
Dimensions including Basin
527h x 500w x 390d
Q2D 500 - £549



600mm Unit
Dimensions including Basin
527h x 600w x 390d
Q2D 600 - £549



800mm Unit
Dimensions including Basin
527h x 800w x 390d
Q2D 800 - £579



1000mm Unit
Dimensions including Basin
527h x 1000w x 390d
Q2D 1000 - £619



1200mm Unit
Dimensions including Basin
527h x 1200w x 390d
Q2D 1200 - £719

All unit dimensions located in matrix at rear of the brochure.

Unit heights include basins.

All prices include VAT (October 2019)

BROOKLYN



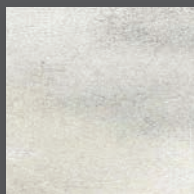
BROOKLYN



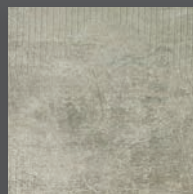
A flat slab matt door in a designer MFC finish with 1mm ABS edges.

All cabinet internals finished in a co-ordinating finish.

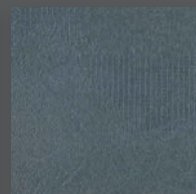
AVAILABLE IN THE FOLLOWING FINISHES:



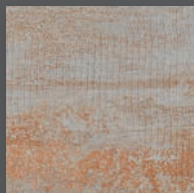
Luna



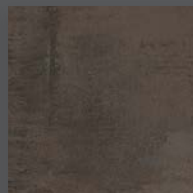
Mercury



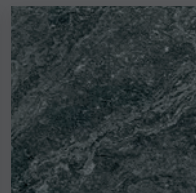
Neptune



Jupiter



Milano Oxide



Charcoal Slate



Featuring the Brooklyn mineral cast basin standing 20mm high above the cabinet.

WC CABINETS

Two removable fronts
One removable co-ordinating top.
Cistern & plumbing access is through removable panels
Pan, seat & cistern not included.



500mm Cabinet
828h x 500w x 220d
BWC 50/2 - £299



500mm Cabinet
1033h x 500w x 220d
BWC 50/2 M - £349

600mm Cabinet
828h x 600w x 220d
BWC 60/2 - £299

600mm Cabinet
1033h x 600w x 220d
BWC 60/2 M - £349

MID HEIGHT WALL CABINETS

Please state L/R hand. Right hand illustrated



300mm Cabinet
One full height door
Three glass shelves
1150h x 300w x 220d
BW 30/2R - £299
BW 30/2L - £299



300mm Cabinet
One full height double sided mirror door inc No. 619 handle
Three glass shelves
1150h x 300w x 210d
BW 30/2FLR - £349
BW 30/2FLL - £349

ONE DRAWER UNITS

One basin
One deep drawer
Heavy duty wall hanging brackets fitted



600mm Unit
Dimensions including Basin
507h x 600w x 450d
B1D 600 - £569



900mm Unit
Dimensions including Basin
507h x 900w x 450d
B1D 900 - £629

TWO DRAWER UNITS

One basin
One shaped drawer & One standard drawer
Heavy duty wall hanging brackets fitted



600mm Unit
Dimensions including Basin
507h x 600w x 450d
B2D 600 - £609



900mm Unit
Dimensions including Basin
507h x 900w x 450d
B2D 900 - £679

CLOAKROOM & FLOORSTANDING UNITS

One basin
Two doors
One MFC Shelf



SHALLOW DEPTH
500mm Unit
Dimensions including Basin
830h x 500w x 360d
BF 500 - £629



600mm Unit
Dimensions including Basin
830h x 600w x 450d
BF 600 - £629



SHALLOW DEPTH
500mm Unit
Dimensions including Basin
507h x 500w x 360d
BW 500 - £529



600mm Unit
Dimensions including Basin
507h x 600w x 450d
BW 600 - £529

All unit dimensions located in matrix at rear of the brochure.

Unit heights include basins.

All prices include VAT (October 2019)

TRIBECA



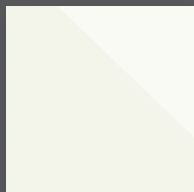
TRIBECA



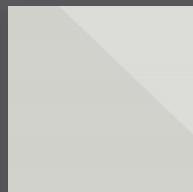
A flat slab door in a Gloss or Matt foiled finish. Designed with an inset scoop with a complementary scoop handle.

* All cabinet internals finished in a co-ordinating finish with the exception of Aqua Blue Gloss which is in a Light Grey Matt finish.

AVAILABLE IN THE FOLLOWING FINISHES:



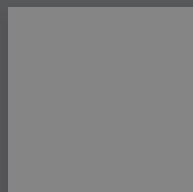
White Gloss



Light Grey Gloss



Aqua Blue Gloss *



Dust Grey Matt

SCOOP PULL HANDLE



No. 678 - Chrome



No. 679 - Black Chrome



No. 680 - Satin Chrome

196 wide x 160 centers, Handles are not sold separately.



Featuring the Tribeca ceramic basin standing 35mm high above the cabinet.

WC CABINETS

Two removable fronts
One removable co-ordinating top.
Cistern & plumbing access is through removable panels
Supplied with slab fronts
Pan, seat & cistern not included.



500mm Cabinet
828h x 500w x 220d
TWC 50/2 - £299



500mm Cabinet
1033h x 500w x 220d
TWC 50/2 M - £349

600mm Cabinet
828h x 600w x 220d
TWC 60/2 - £299

600mm Cabinet
1033h x 600w x 220d
TWC 60/2 M - £349

MID HEIGHT WALL CABINETS

Supplied with central side scoop pull handle on solid door.
Please state L/R hand. Right hand illustrated



300mm Cabinet
One full height door
Three glass shelves
1150h x 300w x 220d
TW 30/2R - £299
TW 30/2L - £299



300mm Cabinet
One full height double
sided mirror door inc
No. 619 handle
Three glass shelves
1150h x 300w x 210d
TW 30/2FLR - £349
TW 30/2FLL - £349

ONE DRAWER UNITS

One basin
One deep drawer
One scoop handle
Heavy duty wall hanging brackets fitted



600mm Unit
Dimensions including Basin
522h x 610w x 465d
T1D 610 - £599



800mm Unit
Dimensions including Basin
522h x 810w x 465d
T1D 810 - £649



1000mm Unit
Dimensions including Basin
522h x 1010w x 465d
T1D 1010 - £759

TWO DRAWER UNITS

One basin
One shaped drawer & One standard drawer
Two scoop handles
Heavy duty wall hanging brackets fitted



600mm Unit
Dimensions including Basin
522h x 610w x 465d
T2D 610 - £649



800mm Unit
Dimensions including Basin
522h x 810w x 465d
T2D 810 - £699



1000mm Unit
Dimensions including Basin
522h x 1010w x 465d
T2D 1010 - £799

CLOAKROOM & FLOORSTANDING UNITS

One basin
Two doors
Two scoop handles
One MFC Shelf



600mm Unit
Dimensions including Basin
845h x 610w x 465d
TF 610 - £699



600mm Unit
Dimensions including Basin
522h x 610w x 465d
TW 610 - £549

All unit dimensions located in matrix at rear of the brochure.

Unit heights include basins.

All prices include VAT (October 2019)

MANHATTAN



MANHATTAN



A flat slab door in Gloss Acrylic or Lacquered MDF finish with 1mm ABS edges.

All cabinet internals finished in a co-ordinating finish.

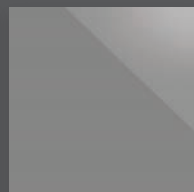
AVAILABLE IN THE FOLLOWING FINISHES:



White Gloss Acrylic



Light Grey Gloss Acrylic



Dust Grey Gloss Acrylic



Fjord Green Gloss



Smoke Blue Gloss



Indigo Blue Gloss



Featuring the Manhattan ceramic basin standing 65mm high above the cabinet.

WC CABINETS

Two removable fronts
One removable co-ordinating top.
Cistern & plumbing access is through removable panels
Pan, seat & cistern not included.



500mm Cabinet
828h x 500w x 220d
MWC 50/2 - £299



500mm Cabinet
1033h x 500w x 220d
MWC 50/2 M - £349

600mm Cabinet
828h x 600w x 220d
MWC 60/2 - £299

600mm Cabinet
1033h x 600w x 220d
MWC 60/2 M - £349

ONE DRAWER UNIT

One basin
One deep drawer
Heavy duty wall hanging brackets fitted



500 Unit
Dimensions including Basin
482h x 505w x 400d
M1D 50S - £649



600 Unit
Dimensions including Basin
482h x 600w x 445d
M1D 600 - £649



800 Unit
Dimensions including Basin
482h x 805w x 455d
M1D 80S - £709



1000 Unit
Dimensions including Basin
482h x 1010w x 460d
M1D 1010 - £779

MID HEIGHT WALL CABINETS

Please state L/R hand. Right hand illustrated



300mm Cabinet
One full height door
Three glass shelves
Dimensions
1150h x 300w x 220d
MW 30/2R - £299
MW 30/2L - £299



300mm Cabinet
One full height double
sided mirror door inc
No. 619 handle
Three glass shelves
1150h x 300w x 210d
MW 30/2FLR - £349
MW 30/2FLL - £349

TWO DRAWER UNIT

One basin
One shaped drawer & One standard drawer
Heavy duty wall hanging brackets fitted



500mm Unit
Dimensions including Basin
482h x 505w x 400d
M2D 50S - £689



600mm Unit
Dimensions including Basin
482h x 600w x 445d
M2D 600 - £689



800mm Unit
Dimensions including Basin
482h x 805w x 455d
M2D 80S - £759



1000mm Unit
Dimensions including Basin
482h x 1010w x 460d
M2D 1010 - £879

A feature of this basin is that it sits 10mm above the cabinet creating an optical floating effect and can be used for flexible strip lighting from the 'Lighting & Accessories' page.

Unit heights include basins.

All prices include VAT (October 2019)

All unit dimensions located in matrix at rear of the brochure.

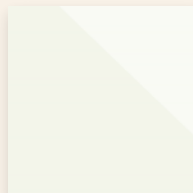


CABINET & DOOR RANGE

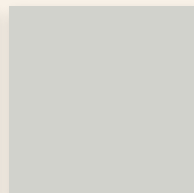
Choosing your door style is important. Colour match to your desired bathroom finish or choose a contrast to suit your taste. It's these touches that makes the bathroom your bathroom.

GREENWICH

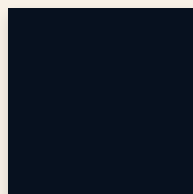
AVAILABLE IN THE FOLLOWING FINISHES:



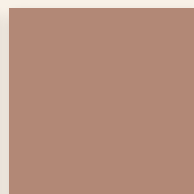
White Gloss



Light Grey Matt *



Navy Blue Matt *



Rose Gold Satin *

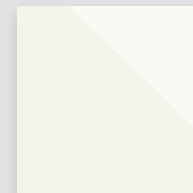
A flat slab door with curved vertical edges in a Gloss, Matt or Satin foiled finish.

* All cabinet internals are finished in a Light Grey Matt finish with the exception of White Gloss which is in a white matt finish.

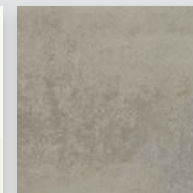


QUEENS

AVAILABLE IN THE FOLLOWING FINISHES:



White Gloss



Concrete Grey Matt *



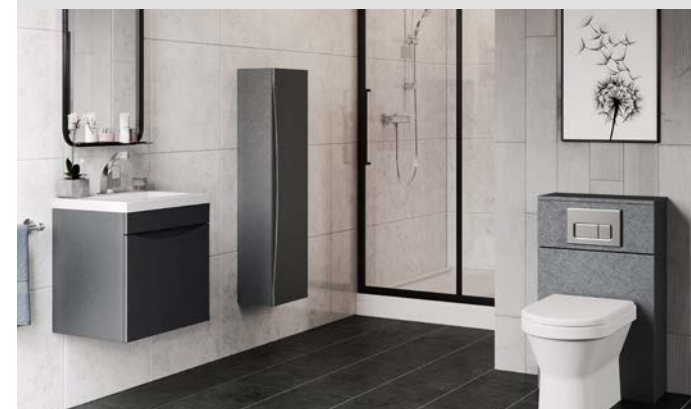
Concrete Steel Matt *



Storm Grey Satin *

A flat slab door with an inset pull handle in a Gloss, Matt or Satin foiled finish.

* All cabinet internals finished in a Light Grey Matt finish with the exception of White Gloss which is in a white matt finish.



BROOKLYN

AVAILABLE IN THE FOLLOWING FINISHES:



Luna

Mercury

Neptune



Jupiter

Milano Oxide

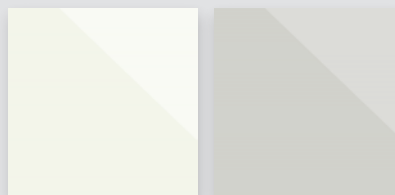
Charcoal Slate

A flat slab matt door in a designer MFC finish with 1mm ABS edges.

All cabinet internals finished in a co-ordinating finish.

TRIBECA

AVAILABLE IN THE FOLLOWING FINISHES:



White Gloss

Light Grey Gloss



Aqua Blue Gloss *

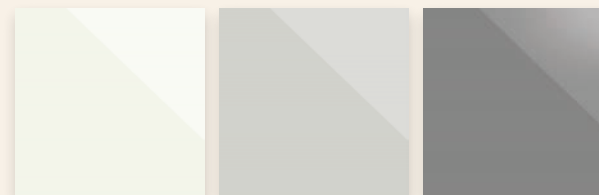
Dust Grey Matt

A flat slab door in a Gloss or Matt foiled finish. Designed with an inset scoop with a complementary scoop handle.

* All cabinet internals finished in a co-ordinating finish with the exception of Aqua Blue Gloss which is in a Light Grey Matt finish.

MANHATTAN

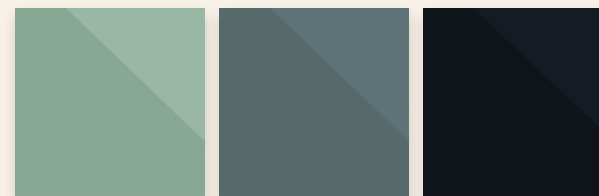
AVAILABLE IN THE FOLLOWING FINISHES:



White Gloss Acrylic

Light Grey Gloss Acrylic

Dust Grey Gloss Acrylic



Fjord Green Gloss

Smoke Blue Gloss

Indigo Blue Gloss

A flat slab door in Gloss Acrylic or Lacquered MDF finish with 1mm ABS edges.

All cabinet internals finished in a co-ordinating finish.





HANDLES

A wide selection of handles available in a range of finishes chosen to enable you to design your perfect bathroom.

All handles, brassware & accessories have been selected to complement one another. Due to different materials being used shading differences may apply.

FEATURE DRAWER SIDES



FEATURE DRAWER SIDE UPGRADE

Feature side drawer upgrades are available in Chrome, Brushed Copper or Brass. These are designed to clip on easily to the side of the standard graphite grey drawer to give a complementary finish to handles and brassware.

All drawers feature built in soft close and full extension runners

MOSAIC KNOB CHROME



No. 681 – £5.00
32 Wide x Single Centre



No. 682 – £10.00
60 Wide x 32 Centres

MOSAIC KNOB BLACK NICKEL



No. 683 – £6.00
32 Wide x Single Centre



No. 684 – £12.00
60 Wide x 32 Centres

BOW HANDLE CHROME



No. 692 – £10.00
240 Wide x 160 Centres



No. 693 – £12.00
385 Wide x 320 Centres

OVALE HANDLE CHROME



No. 640 – £10.00
Wide 85 x 110 x 64 Centre

HOURLASS KNOB CHROME



No. 619 – £5.00
19 Diameter x Single centre

FRAME HANDLE MATT BLACK+



No. 694 – £10.00
168 Wide / 160 Centres

KNURLED 'T' KNOB & 'D' HANDLE STEEL



No. 687 – £6.00
60 Wide x Single Centre



No. 688 – £10.00
182 Wide x 160 Centres



No. 689 – £12.00
278 Wide x 256 Centres

KNURLED KNOB & "T" BAR HANDLE BLACK



No. 695 – £5.00
18 Diameter x Single Centre



No. 696 – £10.00
220 Wide x 160 Centres



No. 697 – £12.00
380 Wide x 320 Centres

'D' HANDLE SATIN BRASS+



No. 706 – £6.00
188 Wide x 160 Centres



No. 707 – £10.00
360 Wide x 320 Centres

+Co-ordinating taps available.

Please note: Due to photographic & printing processes colours may not be a true representation of the product.

BOW HANDLE SATIN COPPER+



No. 690 – £10.00
240 Wide x 160 Centres



No. 691 – £12.00
385 Wide x 320 Centres

SLIM CURVE "D" HANDLE MATT BLACK+



No. 685 – £10.00
175 Wide x 160 Centres



No. 686 – £15.00
335 Wide x 320 Centres

ARCH HANDLE CHROME



No. 704 – £8.00
215 Wide x 192 Centres



No. 705 – £10.00
360 Wide x 320 Centres

TWIST BAR HANDLE CHROME+



No. 698 – £8.00
170 Wide x 160 Centres



No. 699 – £10.00
330 Wide x 320 Centres

BAR HANDLE CHROME



No. 673 – £15.00
400 wide x 320 Centres



No. 674 – £15.00
500 wide x 320 Centres

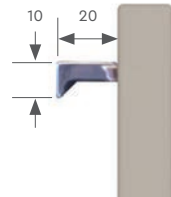


No. 675 – £20.00
600 wide x 480 Centres



No. 676 – £25.00
900 wide x 640 Centres

Please note: Bar Handle Chrome illustrated protruding from the front.



BOLT TWO COLOUR "D" HANDLE COPPER / CHROME



No. 702 – £8.00
178 Wide x 160 Centres



No. 703 – £10.00
338 Wide x 320 Centres

BOLT TWO COLOUR "D" HANDLE COPPER / BLACK



No. 700 – £8.00
178 Wide x 160 Centres



No. 701 – £10.00
338 Wide x 320 Centres

FEATURE DRAWER SIDE UPGRADE

Feature drawer sides are supplied loose, sold per pair and are simply clipped on for fitting on site. Order quantities depend on the drawer unit. One set for a single drawer and two sets for a two drawer unit.



Chrome
Standard Side Panel: **STD CH – £17**
Deep Side Panel: **DEEP CH – £36**



Brushed Copper
Standard Side Panel: **STD BC – £17**
Deep Side Panel: **DEEP BC – £36**



Brass
Standard Side Panel: **STD BR – £17**
Deep Side Panel: **DEEP BR – £36**

+Co-ordinating taps available.

All handles are inclusive when selected with a cabinet.
Prices shown are for purchasing extra handles.
900, 1000 & 1200 wide Cabinets are suitable for up to 2 handles per drawer. (State handle quantity required at the time of ordering)

All prices include VAT (October 2019)

BATH PANELS



BATH FRONT PANEL

500mm x 1800mm

Price Group A **BP18/5F** - £130

Price Group B **BP18/5F** - £185



BATH FRONT PLINTH

200mm x 1800mm

Price Group A **BPP18/2F** - £65

Price Group B **BPP18/2F** - £85



BATH END PANEL

500mm x 800mm

Price Group A **BP8/5E** - £79

Price Group B **BP8/5E** - £112



BATH END PLINTH

200mm x 800mm

Price Group A **BPP8/2E** - £30

Price Group B **BPP8/2E** - £50

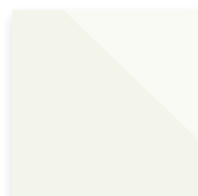
Matching plinth available to allow height adjustment up to 650mm high.

All bath panels are supplied in a flat slab style.

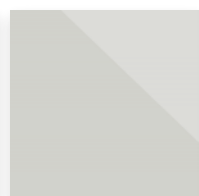
Bath panels can be scribed on site to suit smaller baths & should be sealed with PVA sealant (sealant not supplied).

GLOSS, MATT & SATIN TO SUIT GREENWICH, QUEENS & TRIBECA

PRICE GROUP A



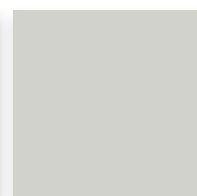
White Gloss



Light Grey Gloss



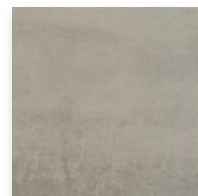
Aqua Blue Gloss



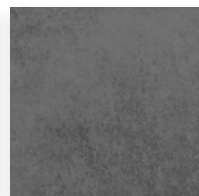
Light Grey Matt



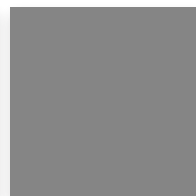
Navy Blue Matt



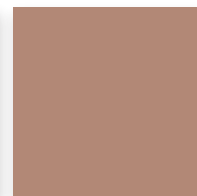
Concrete Grey Matt



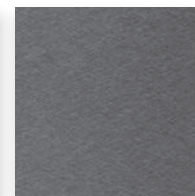
Concrete Steel Matt



Dust Grey Matt



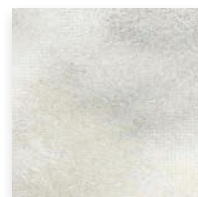
Rose Gold Satin



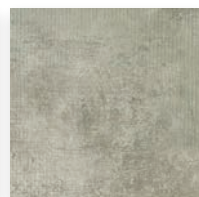
Storm Grey Satin

MATT MFC TO SUIT BROOKLYN

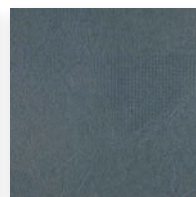
PRICE GROUP B



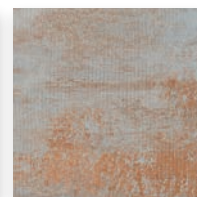
Luna



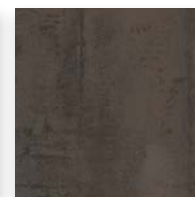
Mercury



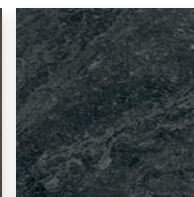
Neptune



Jupiter



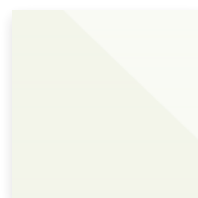
Milano Oxide



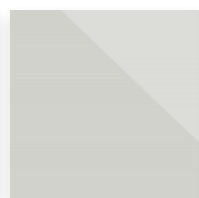
Charcoal Slate

GLOSS ACRYLIC & LACQUERED MDF TO SUIT MANHATTAN

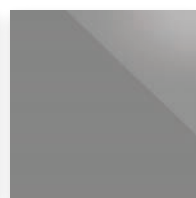
PRICE GROUP B



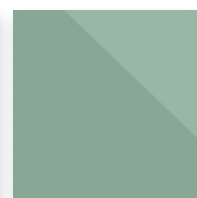
White Gloss Acrylic



Light Grey Gloss Acrylic



Dust Grey Gloss Acrylic



Fjord Green Gloss



Smoke Blue Gloss



Indigo Blue Gloss

PAN & CISTERNS

CERAMIC BACK TO WALL

Back To Wall pan



Arco Pan Round
Including soft close quick release seat
355w x 540d x 410h

ARCO R BTW PAN - £199



Arco Pan Square
Including soft close quick release seat
350w x 545d x 410h

ARCO SQ BTW PAN - £199



Bordo Pan
Including soft close seat
355w x 540d x 400h

BORDO BTW PAN - £343

CERAMIC WALL HUNG

Wall Hung Pan requires WCIB fixing frame



Arco Pan Round
Including soft close quick release seat
360w x 550d x 325h

ARCO R WH PAN - £229



Arco Pan Square
Including soft close quick release seat
340w x 555d x 325h

ARCO SQ WH PAN - £229



Bordo Pan
Including soft close seat
355w x 520d x 330h

BORDO WH PAN - £343

CONCEALED CISTERN PUSH BUTTON OPTIONS



Dual Flush Cistern
Including small round chrome button
(51mm diameter)

ATDVC - £225



Dual Flush Cistern
Including large round chrome button
(73.5mm diameter)

ATDVCLB - £225



Dual Flush Cistern
Including square chrome button
(73.5mm square)

ATDVCS - £225



Concealed cistern is pneumatically operated with a choice of three chrome dual flush push buttons.

CONCEALED CISTERN FLUSH PLATE OPTIONS



Chrome Plate
Oval dual flush button
Cistern not included
232w x 152h x 16d

PLATE CH OV - £74



Chrome Plate
Square dual flush button
Cistern not included
232w x 152h x 14d

PLATE CH SQ - £74



Black Matt Plate
Square dual flush button
Cistern not included
232w x 152h x 14d

PLATE BM SQ - £89



Black Matt Plate
Square Brushed Copper dual flush button
Cistern not included
232w x 152h x 14d

PLATE BC SQ - £118

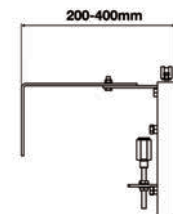
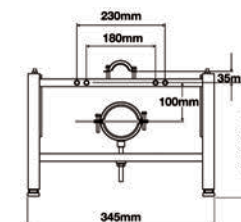
Designed for use with dual flush cisterns shown above ATDVC, ATDVCLB, ATDVCS (cistern not included).

WALL HUNG WC FRAME



Depth & height adjustable frame to suit Bordo, Arco Round & Square pans
345w x 290-340h x 200-400d
Passes 400kg load test based on EN997
Supplied with 198mm WC fixing bolts
Pan not included

WCIB - £273

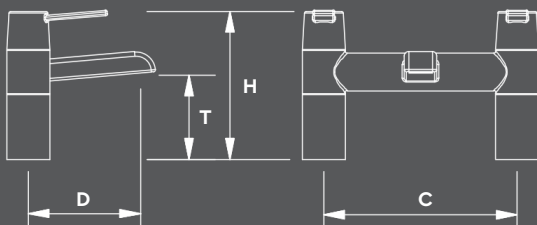


Pan height dimension does not include seat.

All prices include VAT (October 2019)

BRASSWARE

DIMENSIONING



Description Example:
154h x 122d x 82t x 180c (0.1 bar)

Description shows:
Overall height x Tap centre depth x Outlet height x Fixing Centres

(Minimum Operating Pressure)
Please note that all our taps have ceramic cartridge internals
and are suitable for high and low water pressures

All handles, brassware & accessories have been selected to
complement one another. Due to different materials being used
shading differences may apply.



FEATURE BRASSWARE

SATIN BRASS SQUARE*



BASIN MIXER
Including Waste
Satin Brass Finish
147h x 105d x 91t (0.2bar)

TAP SB BM - £164



BATH FILLER
Waste not included
Satin Brass Finish
142h x 102d x 82t x 180c (0.2bar)

TAP SB BF - £243

SATIN COPPER



BASIN MIXER
Including Waste
Satin Copper Finish
144h x 118d x 62t (0.2bar)

TAP CP BM - £170



BATH FILLER
Waste not included
Satin Copper Finish
111h x 112d x 43t x 180c (0.1bar)

TAP CP BF - £222

BLACK CHROME ROUND*



BASIN MIXER
Including Waste
Black Chrome Finish
144h x 104d x 89t (0.2 bar)

TAP BC BM - £158



BATH FILLER
Waste not included
Black Chrome Finish
119h x 114d x 64t x 180c (0.5 bar)

TAP BC BF - £218

BLACK MATT ROUND*



BASIN MIXER
Including Waste
Black Matt Finish
168h x 125d x 78t (0.2 bar)

TAP BM BM - £89



BATH FILLER
Waste not included
Black Matt Finish
147h x 112d x 60t x 180c (0.5 bar)

TAP BM BF - £118

*Co-ordinating Handles available.

CHROME BRASSWARE

VARANO



BASIN MIXER
Includes Waste
Chrome Finish
141h x 103d x 92t (0.2 bar)

TAP V BAS – £102

ORLA



BASIN MIXER
Includes Waste
Chrome Finish
145h x 105d x 90t (0.2 bar)

TAP OR BAS – £64

CONTEMPORARY ROUND



BASIN MIXER
Including Waste
Chrome finish
186h x 106d x 99t (0.1 bar)

TAP CR BM – £74

COMO



BASIN MIXER
Includes Waste
Chrome Finish
145h x 115d x 75t (0.2 bar)

TAP COM BAS – £75

LEDRO



BASIN MIXER
Includes Waste
Chrome Finish
138h x 100d x 86t (0.2 bar)

TAP LED BAS – £63



BATH FILLER
Waste not included
Chrome Finish
146h x 111d x 88t x 180c (1 bar)

TAP OR BF – £147



BATH FILLER
Waste not included
Chrome finish
143h x 110d x 69t x 180c (0.2 bar)

TAP CR BF – £99



BATH FILLER
Waste not included
Chrome Finish
122h x 110d x 60t x 180c (1 bar)

TAP COM BF – £127

LESSINO



BASIN MIXER
Includes Waste
Chrome Finish
152h x 113d x 106t (0.2 bar)

TAP LES BAS – £106



BATH FILLER & SHOWER MIXER
Waste not included
Chrome Finish
146h x 111d x 85t x 180c (1 bar)

TAP OR BSM – £165



BATH FILLER & SHOWER MIXER
Waste not included
Chrome finish
143h x 110d x 69t x 180c (0.2 bar)

TAP CR BSM – £121



BATH FILLER & SHOWER MIXER
Waste not included
Chrome Finish
122h x 110d x 60t x 180c (1 bar)

TAP COM BSM – £159

CHROME BRASSWARE

SQUARE CURVED



BASIN MIXER
Including Waste
Chrome finish
156h x 113d x 79t (0.2 bar)

TAP SC BM – £79



BATH FILLER
Waste not included
Chrome finish
154h x 122d x 80t x 180c (0.5 bar)

TAP SC BF – £141



BATH FILLER & SHOWER MIXER
Waste not included
Chrome finish
154h x 122d x 80t x 180c (0.5 bar)

TAP SC BSM – £167

CHROME ROUND



BASIN MIXER
Including Waste
Chrome Finish
168h x 125d x 78t x 42c (0.2 bar)

TAP CHR BM – £78



BATH FILLER
Waste not included
Chrome Finish
147h x 112d x 60t x 180c (0.5 bar)

TAP CHR BF – £102



BATH FILLER
Waste not included
Chrome Finish
147h x 112d x 60t x 180c (0.5 bar)

TAP CHR BSM – £123

AVRA



BASIN MIXER
Includes Waste
Chrome Finish
150h x 123d x 110t (0.2 bar)

TAP AV BAS – £109



BATH FILLER
Waste not included
Chrome Finish
126h x 106d x 80t x 180c (0.5 bar)

TAP AV BF – £175



BATH FILLER & SHOWER MIXER
Waste not included
Chrome Finish
126h x 106d x 80t x 180c (0.5 bar)

TAP AV BSM – £193

IDRA*



BASIN MIXER
Includes Waste
Chrome Finish
170h x 125d x 136t (0.5 bar)

TAP ID BAS – £135



BATH FILLER
Waste not included
Chrome Finish
205h x 117d x 164t x 180c (1 bar)

TAP ID BF – £215



SHOWER MIXER
Rail 610 High
Chrome Finish
48h x 76d x 150c (2 bar)

SHOWER IDRA – £265

SHOWER & ACCESSORIES

THERMOSTATIC SHOWERS



SHOWER
Rail 633 High
Chrome finish
60h x 80d x 150c (0.2 bar)

SHOWER RO1 – £130



SHOWER
Chrome finish
900h x 475d x 150c (0.2 bar)

SHOWER SQ2 – £365



SHOWER
Adjustable head height
Chrome finish
900–1350h x 590d x 150c (0.2 bar)

SHOWER RO2 – £348

BASIN WASTE



NANO WASTE FITTING
Space saving pop-up waste fitting

NANO WASTE – £43



PUSH FIT TRAP
Height under basin 54mm.
To suit push fit waste pipe Flexible
de-siphoning valve

SSTRAP – £33

BASIN OVERFLOW RING



BASIN OVERFLOW RING
Available in three finishes

£10



	Black Gloss	Satin Copper	Satin Brass
BROOKLYN	OR B BG	OR B CP	OR B BR
GREENWICH	OR G BG	OR G CP	OR G BR
MANHATTAN	OR M BG	OR N CP	OR M BR
QUEENS	OR Q BG	OR Q CP	OR Q BR
TRIBECA	OR T BG	OR T CP	OR T BR

OPEN PAPER HOLDER



OPEN PAPER HOLDER
Chrome finish

U TRH – £39



OPEN PAPER HOLDER
Chrome finish

U TRING – £54

ROBE HOOK



ROBE HOOK
Chrome finish

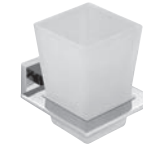
U ROBE – £35

SOAP DISH & TUMBLER HOLDER



SOAP DISH & HOLDER
Chrome finish with Frosted Glass

U SOAP – £48



TUMBLER & HOLDER
Chrome finish with Frosted Glass

U TUMBLER – £48

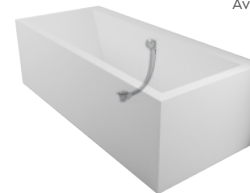
TOWEL RAIL 600MM



TOWEL RAIL 600mm
Chrome finish

U Rail – £77

POP-UP BATH WASTE



POP-UP BATH WASTE
Available in four finishes

Chrome	WASTE BATH CR – £67
Satin Brass	WASTE BATH SB – £75
Satin Copper	WASTE BATH SC – £85
Black Chrome	WASTE BATH BC – £70



CABINET TOWEL RAIL*



CAB TOWEL RAIL
Available in four finishes

Chrome	CAB RAIL CR – £39
Satin Brass	CAB RAIL BR – £68
Satin Copper	CAB RAIL CP – £68
Black Chrome	CAB RAIL BC – £68

*Towel rail installed on side of furniture prior plumbing.

LED MIRROR CABINETS

ZONE INDICATORS = 0 1 2

LAMBRO

CW IP44 2



Features:

- Single door
- Mirrored side panels
- Demister pad
- Shaver socket
- Infra red on/off sensor
- 240v (25.5 Watts)
- 500w x 700h x 138d

LAMBRO 1 - £549



Features:

- Double door
- Mirrored side panels
- Demister pad
- Shaver socket
- Infra red on/off sensor
- 240v (29 Watts)
- 600w x 700h x 138d

LAMBRO 2 - £680

ORCO



Features:

- Single door
- Mirrored side panels
- Demister pad
- Shaver/Charger socket
- Infra red on/off sensor
- Bluetooth speaker
- 240v (38.6 Watts)
- 564w x 700h x 126d

ORCO 1 - £659



Features:

- Double door
- Mirrored side panels
- Demister pad
- Shaver/Charger socket
- Infra red on/off sensor
- Bluetooth speaker
- 240v (41.3 Watts)
- 664w x 700h x 126d

ORCO 2 - £719



Features:

- Triple door
- Mirrored side panels
- Demister pad
- Shaver/Charger socket
- Infra red on/off sensor
- Bluetooth speaker
- 240v (50 Watts)
- 1200w x 700h x 126d

ORCO 3 - £829

FIORA

CW IP44 2



Features:

- Double door
- Mirrored side panels
- Shaver/Charger socket
- Infra red on/off sensor
- Soft close doors
- 240v (15.6 Watts)
- 700w x 700h x 120d

FIORA 2 - £759

LED FEATURE MIRRORS

BRENTA

CW IP44 2



Features:

- Touch switch & dimmable
- Fixed left hand glass shelving
- 6mm glass shelves
- 240v (4.8 Watts)
- 1150w x 750h x 150d

BRENTA - £599

ADDA

CW IP44 2

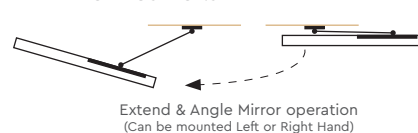


Features:

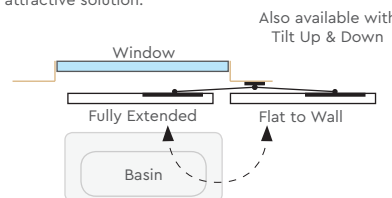
- Mirrored side panels
- Extending wall mounted TV style bracket with left/right fitting, swing and tilt
- Ideal for applications where the window is directly above the basin
- 630w x 650h x 65d

ADDA - £349

MIRROR POSITIONS



A useful application when the window is directly above the basin. The mirror can be swung into position to provide a practical and attractive solution.



Also available with Tilt Up & Down

ARNO



Swivels left & right



Features:

- Swivel wall mounts
- Black powder coated frame and shelf
- Feature ceiling pole
- Pole can be cut to size to suit ceiling height.
- Frame thickness 40mm
- 500w x 1000h x 140d

ARNO - £359

LED MIRRORS

ZONE INDICATORS = **0** **1** **2**

NERA

CCT IP44 **2**



Features:

- Variable colour temperature
- Touch sensor control
- Dimmable
- Demister pad
- 240v (31.2 Watts)
- 500w x 700h x 35d

NERA 50 – £340

HENLEY LED MIRROR

NW IP44 **2**



Features:

- 90mm deep glass shelf
- Demister pad
- Shaver socket
- Infra red on/off sensor
- When planning allow side access for socket
- 240v (2.8 Watts)
- 500w x 600h x 45d

HENLEY 50 – £321

SESIA

CCT IP44 **2**



Features:

- Variable colour temperature
- Touch sensor control
- Backlit
- Demister pad
- Shaver socket
- 240v (45 Watts)
- 600w x 800h x 60d

SESIA 60 – £295

OXFORD

NW IP44 **2**



Features:

- Landscape or Portrait mounted
- Demister pad
- Infra red on/off sensor
- When planning allow side access for sensor
- 240v (12.8Watts)
- 600w x 800h x 40d Portrait
- 800w x 600h x 40d Landscape

OXFORD 60 – £467

ORBA

CW IP44 **2**



Features:

- Landscape or Portrait mounted
- Infra red on/off sensor
- Dimmable
- Integrated demister pad
- When planning allow side access for sensor
- 240V (14.58/20.34/24.65 Watts)
- 500w x 600h x 40d (ORBA 50)
- 900w x 600h x 40d (ORBA 90)
- 1200w x 600h x 40d (ORBA 120)

ORBA 50 – £329

ORBA 90 – £417

ORBA 120 – £516

MAGRA

CCT IP44 **2**



Features:

- Variable colour temperature
- Touch sensor control
- Backlit
- Demister pad
- 240v (21 Watts)
- 600 diameter x 30d

MAGRA – £269

PANARO

CW IP44 **2**



Features:

- Infra red on/off sensor
- Backlit
- Demister pad
- 240v (34 Watts)
- 600 diameter x 30d

PANARO – £287

TREBIA

CCT IP44 **2**



Features:

- Landscape or Portrait mounted
- Variable colour temperature
- Touch sensor control
- Backlit
- 240v (30.7 Watts)
- 500w x 800h x 30d Portrait
- 800w x 500h x 30d Landscape

TREBIA – £287

MIRRORS & LED LIGHTING

ZONE INDICATORS = 0 1 2

UNIVERSAL



Features:

- Can be mounted landscape or portrait
- Concealed hanging rails
- MIR 330 – 330w x 655h x 30d
- MIR 385 – 385w x 655h x 30d
- MIR 60 – 600w x 900h x 30d
- MIR 70 – 700w x 900h x 30d
- MIR 80 – 800w x 900h x 30d

MIR 330 – £153
MIR 385 – £167
MIR 60 – £219
MIR 70 – £236
MIR 80 – £257

OVALE



Features:

- Can be mounted landscape or portrait
- Concealed hanging rails
- OM 60 – 600w x 450h x 30d
- OM 90 – 900w x 450h x 30d
- OM 120 – 200w x 450h x 30d

OM 60 – £217
OM 90 – £227
OM 120 – £246

FEATURE GLASS SHELF



Features:

- Curved glass shelf with two chrome support brackets.
- 8mm Clear Glass
- GFS40 = 380w x 120d
- GFS60 = 580w x 120d
- GFS70 = 680w x 120d
- GFS80 = 780w x 120d

GFS40 – £71
GFS60 – £75
GFS70 – £77
GFS80 – £81

PULSE SQUARE CLIP ON MIRROR LIGHT

12V NW IP44 1 2



Features:

- Suitable to clip onto mirrors up to 6mm thick
- Chrome finish
- 15 Watt driver (up to 3 lights)
- 2 Metre cable
- 12v (4.8 Watt)
- 75w x 75h x 27d

Light (Inc Driver)
LT 249K – £92

Extra Light
LT 249 – £59

LOOP ROUND CLIP ON MIRROR LIGHT

12V NW IP44 1 2



Features:

- Suitable to clip onto mirrors up to 6mm thick
- Chrome finish
- 15 Watt driver (up to 4 lights)
- 2 Metre cable
- 12v (3.6 Watt)
- 75diameter x 26d

Light (Inc Driver)
LT 248K – £92

Extra Light
LT 248 – £59

AALTO CLIP ON MIRROR OR CABINET MOUNTED LIGHT

240V NW IP44 1 2



Features:

- Suitable for over cabinet mounting or to clip onto mirrors up to 6mm thick with supplied adapter
- Chrome finish
- 0.8 Metre cable
- 240v 5 Watt
- 300w x 40h x 180d

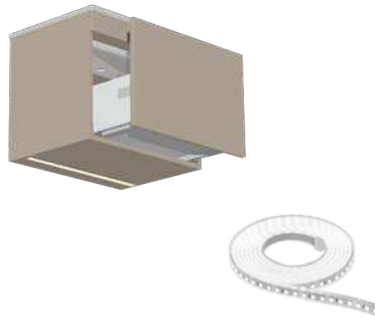
Single Light
LT 250 – £92

LIGHTING & ACCESSORIES

ZONE INDICATORS = **0** **1** **2**

FLEXIBLE LED STRIP LIGHT

12V NW IP44 **1** **2**



Please note: Lights are located under the cabinet.

Features:

- Available in 3 lengths
- White finish
- Clear self adhesive back
- Driver and cable included in kit
- Trimmable at 50mm intervals
- 2m Extension cable (sold separately)
- 240v Driver (9.6 Watts/m)
- Length varies x 8w x 4h

Extension Cable (2 metres)



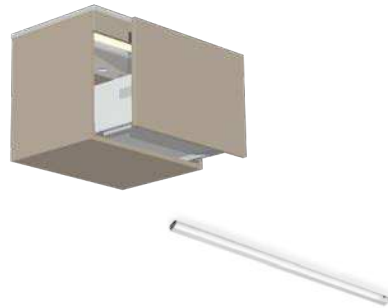
Strip Light Kit (Inc Driver & Power Cable)

500mm (2.4 Watts)
LT 500FK – £71
1000mm (4.8 Watts)
LT 1000FK – £85
2000mm (9.6 Watts)
LT 2000FK – £120

2m Extension Cable
EXT CABLE – £17

LED DRAWER LIGHT

12V NW IP44 **2**



Please note: Lights are located inside the cabinet above the drawer.

Features:

- Available in 5 lengths
- Aluminium finish
- Sensor operated
- Driver and cable included in kit
- 240v Driver (8.0 Watts/m)
- Width varies x 36d x 18h

Drawer Kit (Inc Driver)

To suit 500mm (4.0 Watts)
LT 50DK – £133
To suit 600mm (4.8 Watts)
LT 60DK – £139
To suit 800mm (6.8 Watts)
LT 80DK – £153
To suit 900/1000mm (7.7 Watts)
LT 90DK – £158
To suit 1200mm (10.6 Watts)
LT 120DK – £190

Extra Light

To suit 500mm (4.0 Watts)
LT 50D – £103
To suit 600mm (4.8 Watts)
LT 60D – £106
To suit 800mm (6.8 Watts)
LT 80D – £119
To suit 900/1000mm (7.7 Watts)
LT 90D – £124
To suit 1200mm (10.6 Watts)
LT 120D – £158

BATH PANEL & PLINTH LIGHT KIT

CW IP67 **0** **1** **2**



Features:

- 6 Low profile round lights
- Stainless finish
- Daisychain connection
- 0.5m Daisychain cables
- Driver and cable included in kit
- 1.5m Driver power cable
- 240v Driver (8.0 Watts/m)
- 30 diameter

LT 155 – £57

CAPSENS HIDDEN LIGHT SWITCH TOUCH SENSITIVE

12V IP44 **2**



Extended touch allows light intensity adjustment.

Supplied with
• 2 Metre cable

CAP SWITCH – £79

Please note: Not suitable for use with LT 155 & LT 250.

TOUCH ME LIGHT SWITCH TOUCH SENSITIVE

12V IP44 **2**



Extended touch allows light intensity adjustment.

Supplied with
• 2 Metre cable

TOUCH SWITCH – £52

Please note: Not suitable for use with LT 155 & LT 250.

EXTRA DRIVER

240V IP44 **2**



Individual driver compatible for 12v lights. Supplied with 2 metre mains lead & 10 way connector with 1 metre lead Do not exceed maximum capacity of 15 watts.

DRIVER 15W – £32



GREENWICH



Rose Gold Satin

QUEENS



Concrete Steel Matt

BROOKLYN



Charcoal Slate

TRIBECA



Light Grey Gloss

MANHATTAN



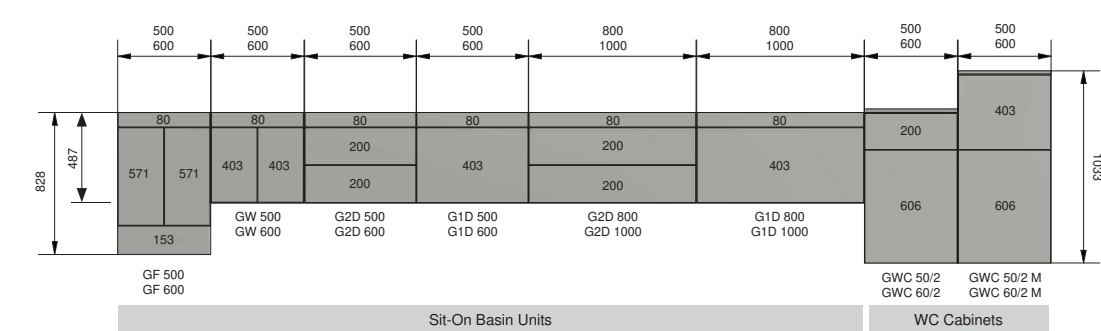
Smoke Blue Gloss

ORDER FORM

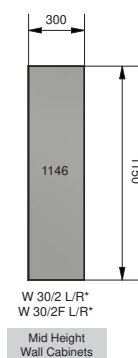
CUSTOMER NAME:		CUSTOMER REF:		ORDER DATE:		DELIVERY DATE W/C								
NAME & ADDRESS:				DELIVERY ADDRESS (IF DIFFERENT)										
<div>Telephone No:</div> <div>Contact Email:</div>				<div>Site telephone no:</div> <div>*Direct Delivery Charges apply contact office</div>										
BROOKLYN		<input type="checkbox"/>	MANHATTAN		<input type="checkbox"/>	QUEENS		<input type="checkbox"/>	TRIBECA		<input type="checkbox"/>	GREENWICH		<input type="checkbox"/>
COLOUR:				HANDLE NO:				UPGRADE HANDLE NO: <small>*Additional charge apply</small>						
QTY	CODE NUMBER	HANDING L/R <small>If applicable</small>	OPTIONAL UPGRADE SIDE PANELS			COMMENTS								
			Chrome	Brushed Copper	Brass									
			<small>*Additional charge apply</small>											

GENERAL CABINETS RANGE

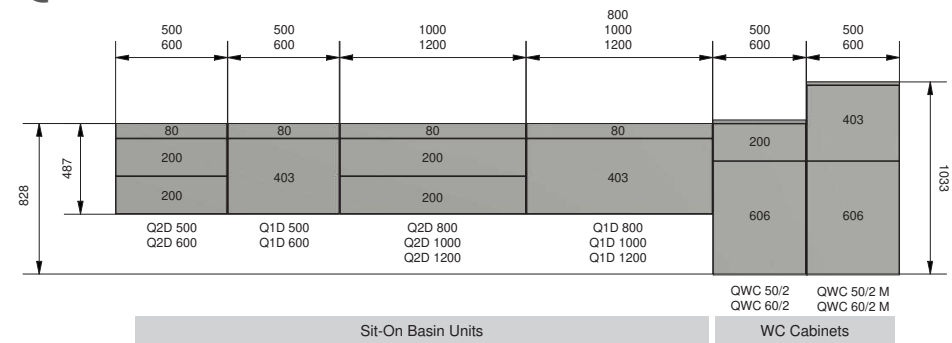
GREENWICH



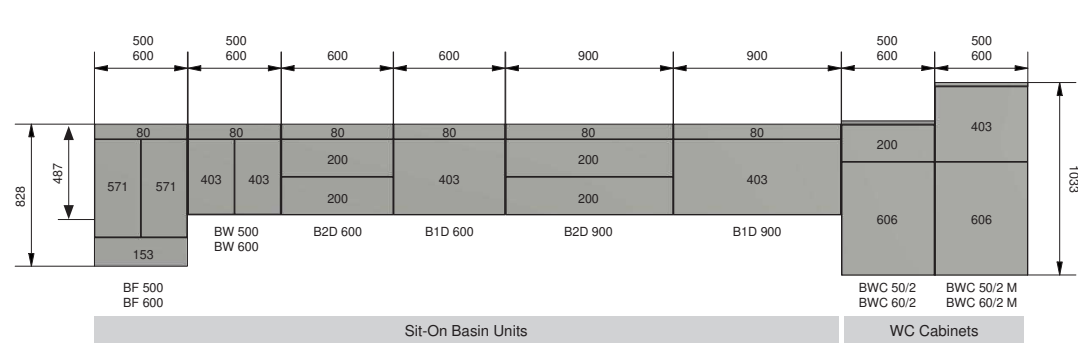
ALL RANGES



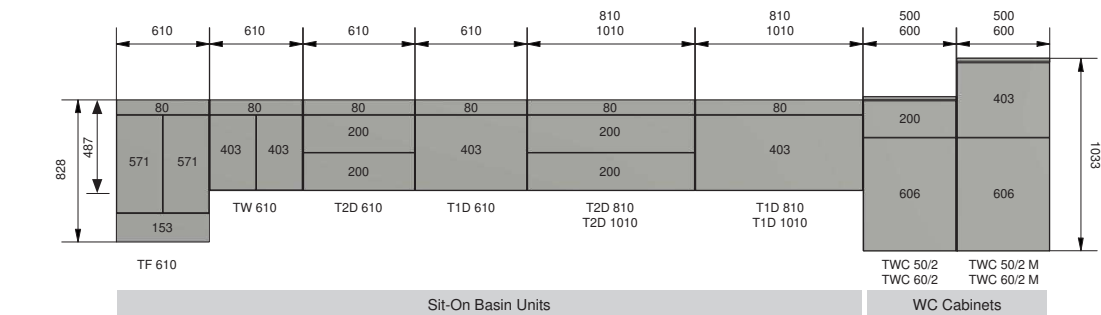
QUEENS



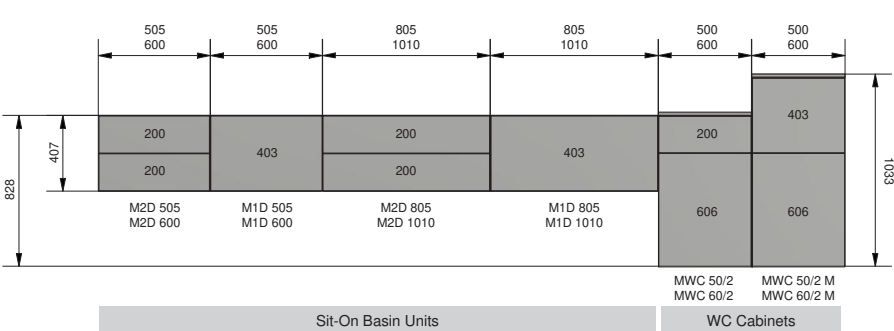
BROOKLYN



TRIBECA



MANHATTAN

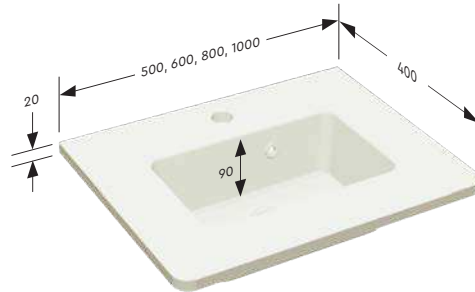


BASIN DIMENSIONS

GREENWICH

Mineral cast basin with 20mm rim height.
One central tap hole & integral over flow.

GB 500 – 500w x 400d x 90 bowl depth
GB 600 – 600w x 400d x 90 bowl depth
GB 800 – 800w x 400d x 90 bowl depth
GB 1000 – 1000w x 400d x 90 bowl depth

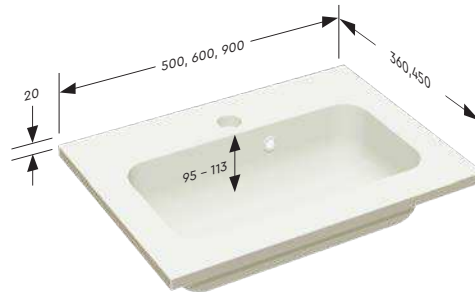


BROOKLYN

Mineral cast basin with 20mm rim height.
One central tap hole & integral over flow.

BB 500 – 500w x 360d x 95 bowl depth
BB 600 – 600w x 450d x 113 bowl depth
BB 900 – 900w x 450d x 113 bowl depth

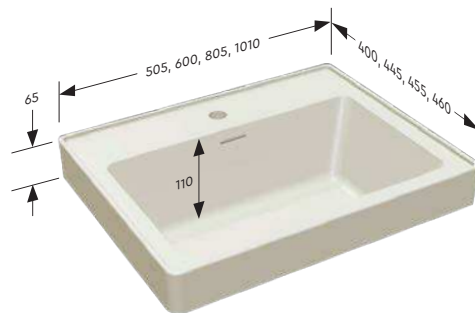
Please note: That the over flow position varies on the basin depending on width.



MANHATTAN

Ceramic basin with 65mm rim height.
One central tap hole & integral over flow.

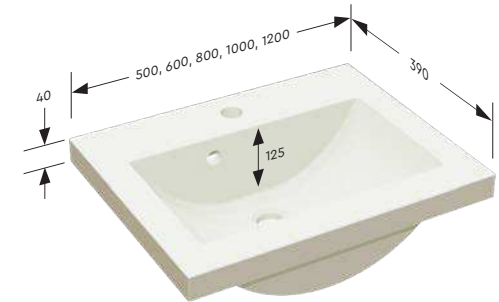
MB 505 – 505w x 400d x 110 bowl depth
MB 600 – 600w x 445d x 110 bowl depth
MB 805 – 805w x 455d x 110 bowl depth
MB 1010 – 1010w x 460d x 110 bowl depth



QUEENS

Mineral cast basin with 40mm rim height.
One central tap hole & integral over flow.

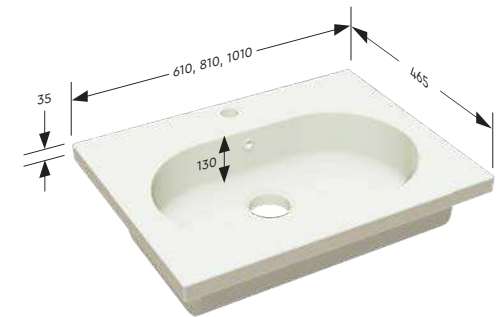
QB 500 – 500w x 390d x 125 bowl depth
QB 600 – 600w x 390d x 125 bowl depth
QB 800 – 800w x 390d x 125 bowl depth
QB 1000 – 1000w x 390d x 125 bowl depth
QB 1200 – 1200w x 390d x 125 bowl depth



TRIBECA

Ceramic basin with 35mm rim height.
One central tap hole & integral over flow.

TB 610 – 610w x 465d x 130 bowl depth
TB 810 – 810w x 465d x 130 bowl depth
TB 1010 – 1010w x 465d x 130 bowl depth

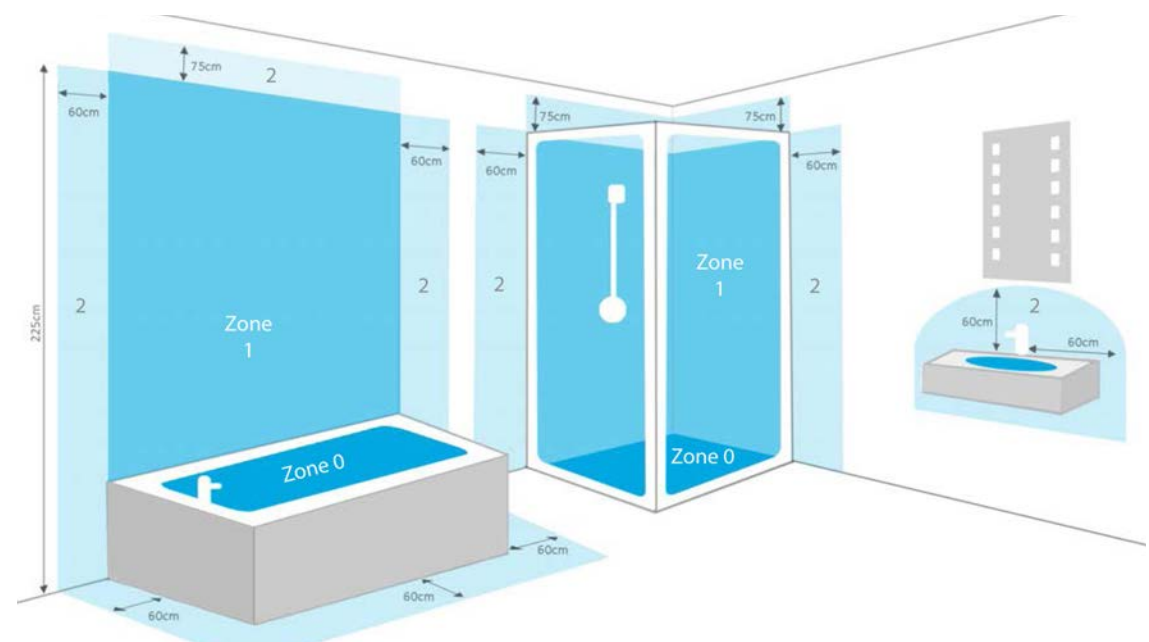


Mineral Cast basins
Mineral Cast basins offer dimensional accuracy.

Ceramic basins
Ceramic basins are subject to manufacturing variations of up to ± 5 mm overall.

Bowl depth dimensions are shown as a guideline.
Within each style overall bowl dimensions can vary from width to width.

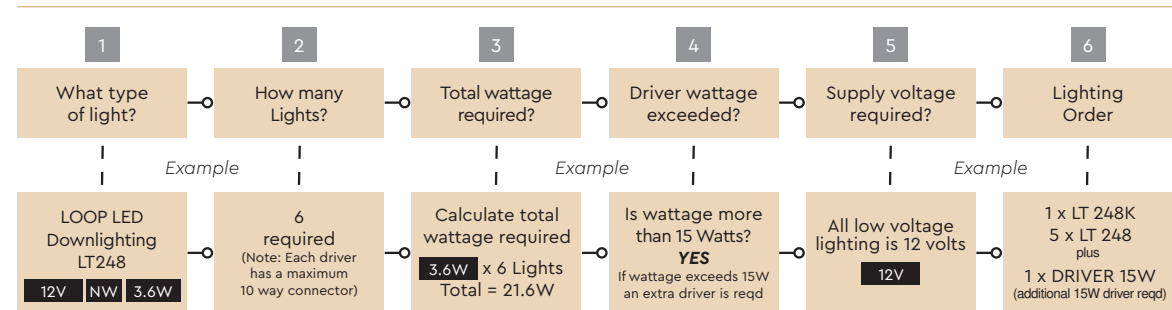
LIGHTING SAFETY



Each light uses the following icon examples to provide information and to help calculate driver requirements.

SUPPLY DRIVER REQUIRED	IP RATING	CORRELATED COOL TEMPERATURE	LIGHTING LEVEL CHOICE		
12V	IP67	CCT	Cool White	Warm White	Natural White
	IP44		CW	WW	NW

ORDERING YOUR LIGHTING SYSTEM



ZONE INDICATORS

Outside Zones

Anywhere outside zones 0, 1 & 2, where water jets are not used for cleaning purposes, the general rules of BS7671 apply.

Safety

The latest IEE wiring regulations have identified specific zones within the bathroom to indicate which type of electrical equipment can be installed. The diagram above shows the three bathroom zones 0, 1 and 2. With this in mind our low voltage lighting fittings have a minimum rating of IP44. We recommend that you use a registered electrician to carry out any electrical installation.

0

Zone 0

Inside the bath or shower. Must be SELV (12v Max) due to water submersion.

Minimum rating IP67

1

Zone 1

225cm above the bath or shower.

Minimum rating IP44

2

Zone 2

The area stretching to 60cm outside the bath, shower or water outlet of basin.

Minimum rating IP44

TERMS & CONDITIONS



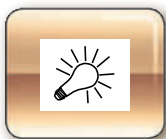
Maintenance and Aftercare

Due to the nature of the materials used, bathroom furniture will be adversely affected by water spillage or heavy condensation. To avoid any deterioration in the cabinets or work surfaces it is important to wipe dry any excess moisture. Please note when cleaning cabinets use a cloth dampened with soapy water, do not use any abrasive cleaners or solvents. We recommend adequate ventilation by installing an extractor fan connected to an outside wall to reduce the harmful effects of condensation. This will minimise the risk of damage that can be caused to these products by prolonged exposure to moisture which bathrooms are prone to.



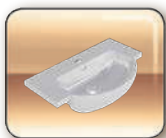
Installation

The installation should be in accordance with our fitting instructions. It is important that a waterproof sealant is used to seal any raw edges especially around basins and worktop joints. It is particularly important to seal along bath panel edges both vertically and horizontally.



Electrical Recommendations

If any electrical fittings are to be installed ensure that all installation of any electrical fittings such as lights and shaving sockets are carried out by a qualified electrician and conform with local building regulations. If you are in any doubt contact your local council Building Control office.



Mineral Cast & Ceramic Basins

When planning basins please take into account the overall width, depth and rim heights to ensure they meet your design requirements. All basin dimensions are detailed in this guide and are manufactured within a +/- 5mm tolerance.



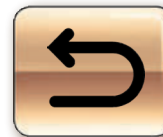
Colour Reproduction

Due to photographic & printing processes some colours may not be a true representation of the product. Please see sample for actual colour. We reserve the right to make changes to design and specifications without prior notice. The photographs may show optional accessories which do not form part of the standard specification. Colour reproduction: We take great care in the photography of products illustrated, however due to variables in the photographic and printing processes, colours may vary from actual product. All copyright is reserved. Any person or company reproducing the same in part or whole, without permission will be liable to prosecution.



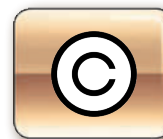
Errors & Omissions Excepted

Due to our policy of continued product development we reserve the right to alter materials and specifications without prior notice.



Returns

Your Urban Living order is created specifically for your requirements. Cancelled orders or items that are no longer required and still within the original packaging can be returned for 70% credit. If returned in a re-salable condition and within 2 weeks of delivery of the item. All worktops are non-returnable and non-refundable.



Copyright Licence

All copyright and intellectual property rights are the property of Urban Living and no persons can reproduce any part of this product guide/ price list by any means, electronic or mechanical, without our written permission.



Guarantee

All Urban Living bathroom furniture is manufactured to the highest quality, therefore all cabinets carry a 5 year guarantee. Guarantee details can be found on our website.

NOTES



Please note: Due to photographic & printing processes some colours may not be a true representation of the product. Please see sample for actual colour.

We reserve the right to make changes to design and specifications without prior notice. The photographs may show optional accessories which do not form part of the standard specification.
Colour reproduction: We take great care in the photography of products illustrated, however due to variables in the photographic and printing processes, colours may vary from actual product.
All copyright is reserved. Any person or company reproducing the same in part or whole, without permission will be liable to prosecution.